

CHAMOT

Recombinant IL-21, Human, GMP

CM025-100HPG
CM025-1000HPG



CHAMOT

喬默生物技術(上海)有限公司
CHAMOT BIOTECHNOLOGY CO., LTD.

CONTENT

1 产品简介

2 产品组成

3 产品储存

4 产品使用

5 产品规范

Recombinant IL-21 (Interleukin-21), Human, GMP

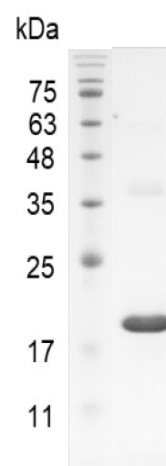
编号:	CM025-100HPG CM025-1000HPG	规格:	100 µg 1 mg
类别:	重组蛋白	应用:	Functional Assay

产品简介

描述: Interleukin-21 (IL-21) belongs to the IL-15/IL-21 family. It is a cytokine with immunoregulatory activity. Cytokines are proteinaceous signaling compounds that are major mediators of the immune response. They control many different cellular functions including proliferation, differentiation and cell survival/apoptosis but are also involved in several pathophysiological processes including viral infections and autoimmune diseases. IL-21 is a cytokine that has potent regulatory effects on cells of the immune system, including natural killer (NK) cells and cytotoxic T cells that can destroy virally infected or cancerous cells. This cytokine induces cell division/proliferation in its target cells.

来源: *Escherichia coli*.
Animal-free reagent and laboratory.
Manufactured and tested under GMP guideline.

纯度: >97% as determined by SDS-PAGE analysis.



SDS-PAGE analysis of recombinant IL-21, Human, GMP

- 生物学活性: Measure by its ability to enhance IFN gamma secretion in NK-92 cells. The ED₅₀ for this effect is <10 ng/mL.
- 内毒素检测: <0.05 EU per 1 µg of the protein by the LAL method.
- 蛋白序列: MQDRHMIRMRLIDIVDQLKNYVN
DLVPEFLPAPEDVETNCEWSAFSCF
QKAQLKSANTGNNERIINVSIIKKLR
KPPSTNAGRRQKHRLTCPSCDSYEK
KPPKEFLERFKSLLQKMIHQHLSSRT
HGSEDS with polyhistidine tag at the C-terminus.

产品组成

- 成分: 从含有 1X PBS, pH 8.0 溶液中冻干的蛋白质, 无任何动物源性成分.

产品储存

- 储存: -20°C冻干粉保存 1 年.
- 运输: 蓝冰.

产品使用

- 1、开盖前, 建议3000-3500rpm离心5min。
- 2、推荐使用无菌水重悬冻干粉, 溶液浓度不低于500 µg/mL, 并室温静置至少20min以充分溶解。勿涡旋剧烈振荡。
- 3、重悬后的溶液, 2-8°C无菌保存不超过1周。
- 4、如需长期保存, 推荐使用无菌的含载体蛋白 (如0.1%BSA、10%FBS 或5%HSA) 的溶液进一步稀释 (不低于10µg/mL) 后分装保存, -20至-80°C无菌保存3到6个月。无血清实验需求时, 可更换为 5%海藻糖溶液作为载体。避免反复冻融。

产品规范

CHAMOT GMP recombinant proteins are manufactured in ISO 13485:2016 and GMP certified facility. The processes include:

- ★Testing and traceability of raw material
- ★Records of the maintenance and equipment calibration
- ★Personnel training records
- ★Batch-to-batch consistency



- ★ Documentation of QA control and process changes
- ★ Manufactured and tested under an ISO 13485:2016 certified quality management system
- ★ Stability monitor of product shelf-life

WB=Western Blot; IP=Immunoprecipitation; IF=Immunofluorescence; IHC=Immunohistochemistry;
FACS=Fluorescence activated Cell Sorting; FA=Functional Assay